

New as of:

06.2015

Sirona Dental CAD/CAM System CEREC Guide

Operating Instructions

English (US)

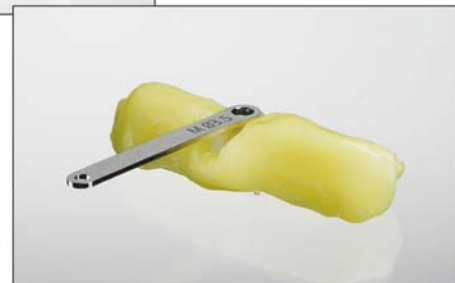


Table of contents

1	General data.....	3
1.1	Structure of the document.....	3
1.1.1	Identification of danger levels.....	3
1.1.2	Formats and symbols used.....	4
1.2	Symbols used.....	4
1.3	Intended use.....	5
1.3.1	Further use of Sirona Dental CAD/CAM system.....	5
1.4	Indications.....	5
2	Safety instructions.....	6
2.1	Exclusion of liability.....	6
2.2	Limitations.....	6
2.2.1	Limitations for CEREC Guide 1.....	6
2.2.2	Limitations for CEREC Guide 2.....	6
2.3	Prerequisites.....	7
2.3.1	Prerequisites for CEREC Guide 1.....	7
2.3.2	Prerequisites for CEREC Guide 2.....	7
2.4	Alternative SICAT OPTIGUIDE.....	8
3	Product description.....	9
3.1	Description of the CEREC Guide surgical guide.....	9
3.1.1	CEREC Guide 1.....	10
3.1.2	CEREC Guide 2.....	11
3.2	Materials.....	12
4	Application.....	18
4.1	Application information.....	18
4.2	Creating a CEREC Guide 1.....	19
4.2.1	Preparation of the scan template.....	19
4.2.2	Planning the implant and exporting the data.....	21
4.2.3	Milling the drill bit.....	23
4.2.4	Creating the surgical guide.....	24
4.3	Creating a CEREC Guide 2.....	26
4.3.1	Optical impression.....	26
4.3.2	3D x-ray and implant planning.....	26
4.3.3	Design and development of the CEREC Guide 2.....	28
4.3.4	Surgical intervention.....	29
5	Disinfection/sterilization of the surgical guide.....	30

1 General data

Please read this document completely and follow the instructions exactly. You should always keep it within reach.

Original language of the present document: German.

1.1 Structure of the document

1.1.1 Identification of danger levels

To prevent personal injury and material damage, please observe the warning and safety information provided in this document. Such information is highlighted as follows:

DANGER

An imminent danger that could result in serious bodily injury or death.

WARNING

A possibly dangerous situation that could result in serious bodily injury or death.

CAUTION

A possibly dangerous situation that could result in slight bodily injury.

NOTICE

A possibly harmful situation which could lead to damage of the product or an object in its environment.

IMPORTANT

Application instructions and other important information.







Tip: Information on making work easier.

1.1.2 Formats and symbols used

The formats and symbols used in this document have the following meaning:

<ul style="list-style-type: none"> ✓ Prerequisite 1. First action step 2. Second action step or ➤ Alternative action ↔ Result ➤ Individual action step 	Prompts you to do something.
see "Formats and symbols used [→ 4]"	Identifies a reference to another text passage and specifies its page number.
• List	Designates a list.
"Command/menu item"	Indicates commands, menu items or quotations.

1.2 Symbols used

Symbol	Description
	NOTICE! Observe operating instructions!
	This product is a medical device in accordance with Council Directive 93/42/EEC.
Rx only	CAUTION: According to US Federal Law, this product may be sold only to or by instruction of physicians, dentists, or licensed professionals.
 ABC123	Article number
 ABC123	Batch number
	This product is intended for single use only
	unsterile

1.3 Intended use

CEREC Guide is a surgical guide for dental implants individually manufactured by specialist dentists or dental technicians. The surgical guide is designed as an auxiliary device for dental surgery.

The CEREC Guide requires the CEREC system and a 3D X-ray system from Sirona, such as GALILEOS or ORTHOPHOS XG 3D.

1.3.1 Further use of Sirona Dental CAD/CAM system

The Sirona Dental CAD/CAM system is also an endosseous dental implant accessory according to 21 CFR 872.3980. The system is used to produce a part that the user can manually incorporate together with other 3rd party components into a dental surgery guide, a temporary accessory used with endosseous dental implants with tissue contact for less than 1 hour (exempt). Such a device is exempt from the premarket notification procedures.

1.4 Indications

The CEREC Guide is used for dental implants that are completed with supported and managed surgical systems (refer to Materials [→ 12]).

2 Safety instructions

2.1 Exclusion of liability

The CEREC Guide surgical guide is an auxiliary device that is manufactured by a qualified dentist or dental technician. The user therefore bears full responsibility for the shape, suitability, and application of the template.

Observe the processing instructions provided by the implant and drill manufacturers.

2.2 Limitations

Different limitations and system requirements apply to the variations of the CEREC Guide 1 and CEREC Guide 2 surgical guide described further below.

2.2.1 Limitations for CEREC Guide 1

A CEREC Guide 1 can be manufactured by you as a clinician or technician by means of an MC X or MC XL milling unit. The CEREC Guide 1 is not a fully automatic solution. It cannot be compared to a surgical guide that has been manufactured centrally based on your design.

A CEREC Guide 1 must not be used for situations which extend over more than one quadrant.

No more than two implants should be set per template.

The thermoplast process is only approved for the extraoral creation of the scan template (on a model).

It is not possible to use the inLab MC X5 device.

2.2.2 Limitations for CEREC Guide 2

A CEREC Guide 2 can be manufactured by you as a clinician or technician by means of an MC X or MC XL grinding unit. The CEREC Guide 2 is not a fully automatic solution. It cannot be compared to a surgical guide that has been manufactured centrally based on your design.

A CEREC Guide 2 must always be supported by the residual teeth. It is not possible to support the guide through the mucous membrane alone.

When working on a MC X or MC XL milling unit, no more than one implant can be created per template.

2.3 Prerequisites

2.3.1 Prerequisites for CEREC Guide 1

To create the optical impression and export a prosthetic proposal:

- CEREC SW 4.0.2 or inLab SW 4.0.2
- Open GALILEOS Implant license

To create a 3D X-ray volume and for implant planning:

- GALILEOS, ORTHOPHOS XG 3D or ORTHOPHOS SL 3D
- Sidexis XG or Sidexis 4
- Galaxis 1.9
- Implant planning software "GALILEOS Implant", V1.9 with SP1

To develop the CEREC Guide 1:

- CEREC SW 4.0.2 or inLab SW 4.0.2
- CEREC only: Open GALILEOS Implant license
- MC X or MC XL grinding unit

CAUTION

Errors when setting the tooth numbering

When setting the tooth numbering to the American (ADA) pattern, an error in GALILEOS Implant V1.9 can cause invalid export data. This can cause the tooth number to be mixed up and hence injure the patient.

➤ Version 1.9 with SP1 is mandatory!

2.3.2 Prerequisites for CEREC Guide 2

To create the optical impression and export a prosthetic proposal:

- CEREC SW 4.3.1
- Open GALILEOS Implant license

To create a 3D X-ray volume and for implant planning:

- GALILEOS, ORTHOPHOS XG 3D or ORTHOPHOS SL 3D
- Sidexis XG or Sidexis 4
- Galaxis 1.9.2
- Implant planning software "GALILEOS Implant", V1.9.2

To develop the CEREC Guide 2:

- CEREC SW 4.4
- CEREC only: Open GALILEOS Implant license
- MC X or MC XL grinding unit with milling function

2.4 Alternative SICAT OPTIGUIDE

If there is any uncertainty at any time or the situation is deemed to be critical, the surgery must not be completed under any circumstances.

In such cases an optical impression (CEREC) of the situation must be imported into the X-ray volume. This can then be used to order a SICAT **OPTIGUIDE**; refer to the "GALILEOS Implant" manual from version 1.9.

3 Product description

3.1 Description of the CEREC Guide surgical guide

CEREC Guide is a precise surgical guide which is individually manufactured in your practice or laboratory. The manufacturing process is fast and incurs comparatively low costs.

The individually manufactured surgical guide is part of the integrated implant plan and surgical implementation using CAD/CAM and 3D X-ray systems from Sirona.

It is a prerequisite that the location of one or more implants has been planned using a 3D X-ray scan (DVT) and that location is to be transferred to the actual jaw. CEREC Guide is a tool that is intended to help the treating physician set the implant. CEREC Guide functions as a surgical guide, which is placed on the residual teeth or another supporting structure in the mouth and acts as a mechanical guide for the drills used. Together with CEREC Guide, drill keys are also used as reducing bushes, which enable the use of drills with smaller diameters.

A distinction is made between two versions:

- CEREC Guide 1:
A surgical guide comprising a template element made of thermoplastic material and a drill bit, with the prerequisite that a DVT has been created using an X-ray reference unit. Creating an optical impression of the situation in the mouth is optional here.
- CEREC Guide 2:
A surgical guide, made from a workpiece, based on an overlay of an optical scan of the situation in the mouth and a DVT image, without using an x-ray reference unit.

3.1.1 CEREC Guide 1

The key steps for manufacturing and using a CEREC Guide 1 are as follows:

- 1. Creating a scan template**

A model of the situation in the mouth is created. A template element is formed of thermoplastic material on the residual teeth in this model. A reference unit is placed in the approximate location of the planned implant in the template element. The position of the scan template and reference unit in the residual teeth is clearly defined in this way.
- 2. Take DVT exposure**

The patient wears the scan template while the DVT exposure is taken. In the DVT scan, the markers contained in the reference unit are visible along with the normal information, upon which the implant planning is based. In this way, the location of the planned implant in relation to the reference unit is determined.
- 3. Create drill bit**

The prefabricated bore in the CEREC Guide Bloc is in line with the drill channel. Based on the planning data, a drill bit is ground out of a CEREC Guide Bloc so that the external form of the drill bit is in line with that of the reference unit and the prefabricated drill hole matches the planned implant axis. In addition, the height of the drill bit is adjusted based on the planning data such that the guided drill must be moved to the stop point in order to reach the desired depth. The reference unit is removed from the scan template and replaced by the drill bit. The drilling template is therefore created from the scan template.
- 4. Surgical intervention**

The drilling template now consists of template elements made of thermoplastic material using a drill bit, which prescribes the direction of the implant and has a depth stop. The drilling template is placed in the patient's mouth. According to the drilling protocol of the manufacturer of the implant, different bores with drills with different guide diameters. CEREC Guide drill keys are used for this and serve as reducing bushes for the respective drill diameter. The mechanical guide of the drill, with a prescribed direction and depth, enables the treating physician to change the planned implant into reality.

3.1.2 CEREC Guide 2

The key steps for manufacturing and using a CEREC Guide 2 are as follows:

1. **Optical scan**
An optical scan of the situation in the mouth is created (either intraoral or using a model). A suitably large area is encompassed, on which the drilling template can later support itself.
A restoration is designed, which initially enables the subsequent implant planning in terms of prosthetic aspects.
This information is exported as a *.SSI file.
2. **DVT exposure**
A DVT scan is performed, which forms the basis for the implant planning.
3. **Implant planning**
Optical scan (Import of the *.SSI file) and DVT scan are superimposed in GALILEOS Implant using striking features, which are present in both scans (such as the residual teeth).
The implant planning is performed based on all of this information. Therefore the location of the guide bushing of the drill is also defined in relation to the residual teeth (or other supporting structures).
The planning data is exported as a *.CMG.DXD file.
4. **Creating the drilling template**
After importing the *.CMG.DXD file in CEREC or inLab, a drilling template is designed, which can be placed on suitable supporting structures and has an opening at a planned location, through which the drill is to be fed. The single-piece template is create from PMMA, for example by milling.
5. **Surgery**
The drilling template is placed in the patient's mouth. According to the drilling protocol of the manufacturer of the implant, different bores with drills with different guide diameters. Drill keys are used for this and serve as reducing bushes for the respective drill diameter.
The mechanical guide of the drill, with a prescribed direction and depth, enables the treating physician to change the planned implant into reality.

3.2 Materials

Thermoplast

Thermoplast is only required to manufacture the template element for CEREC Guide 1.

Thermoplast is a rigid plastic. When heated with hot water it becomes soft and easily pliable.

Recommended materials:

- Hydroplastic from TAK Systems
- Luxaform from DMG Dental

Important: When handling these materials, please observe the relevant application descriptions from the manufacturers.

CEREC Guide Blocs

CEREC Guide Blocs are made of clear Plexiglas® GS 0F00.

The CEREC Guide Blocs S, M and L intended to create a CEREC Guide 1 are delivered together with a reference unit of the appropriate size. These blocks include a prefabricated drill hole to incorporate a CEREC guide drill key of the relevant size (S, M or L). These blocks can be processed using a grinder on the MC X and MC XL grinding units.

CEREC Guide Blocs S, M and L are not suitable for use with the CEREC guide drill key set C for Camlog®.

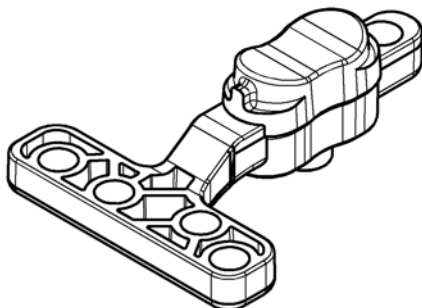
The CEREC Guide Blocs medi and maxi are intended to manufacture a CEREC Guide 2. These blocks are processed in a milling process on the MC X and MC XL grinding units.

All parts are provided unsterilized and are intended for single use only.

Designation	REF	Contents	Notes
CEREC Guide Blocs S	63 75 054	2x Reference units S (orange) 2x CEREC Guide Blocs S	CEREC Guide 1 only
CEREC Guide Blocs M	63 75 062	2x Reference units M (white) 2x CEREC Guide Bloc M	CEREC Guide 1 only
CEREC Guide Blocs L	63 75 070	2x Reference units L (gray) 2x CEREC Guide Bloc L	CEREC Guide 1 only
CEREC Guide Bloc medi	64 66 564	1x CEREC Guide Bloc medi	Length: 55 mm, Width: 40 mm, Height: 22 mm MC X only, CEREC Guide 2 only
CEREC Guide Bloc maxi	64 47 093	1x CEREC Guide Bloc maxi	Length: 85 mm, Width: 40 mm, Height: 22 mm MC XL only, CEREC Guide 2 only

Reference units

Reference units are only required to manufacture the scan template for CEREC Guide 1.



Size	Color	Width (mesial/distal)	Shifting mesial/distal
Small (S)	Orange	6 mm	max. 1.5 mm
Medium (M)	White	7.3 mm	max. 2 mm
Large (L)	Gray	11 mm	max. 4 mm

The reference units can only ever be used with a CEREC Guide Bloc of the same size. The basal surface of the reference unit corresponds to the basal surface of the drill bit, from which the CEREC Guide Bloc is created. As the drill channel must be fully within the basal surface, the plan states a maximum value by which the implant can be shifted in the mesial-distal direction.

Reference units are made of Hostaform® MT 12U01 plastic and are supplied unsterilized. Seven glass soda balls are located in the reference units as radio-opaque markers.

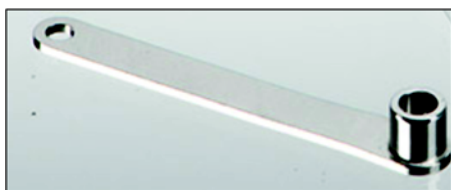
Drill key sets

The drill keys provided by the implant manufacturers are not compatible with CEREC Guide. Use the Sirona drill key in place of the original drill key from the implant manufacturer: CEREC Guide Drill Keys.

CEREC Guide Pilot Drill Keys are only suitable for guiding pilot drills. CEREC Guide Drill Keys Sets also contain additional drill keys to guide the drills for widening drilled holes. Guided insertion of implants using CEREC Guide is not supported.

All CEREC Guide Drill Keys are only suitable for use with the following surgical kits from the respective implant manufacturers.

CEREC Guide drill keys are made of grade 1.4301 stainless steel and are supplied unsterilized.



Designation	REF	Suitable for surgical kit
CEREC Guide Pilot Drill Keys 2.0	64 62 530	AstraTech: Facilitate [®] , pilot drill only Biomet 3i: Navigator [®] , pilot drill only Nobel Biocare: For the pilot drill only <ul style="list-style-type: none"> • Branemark[®] System Guided Surgery Kit • NobelReplace[®] Straight Guided Surgery Kit • NobelReplace[®] Tapered Guided Surgery Kit • NobelActive Guided Surgery Kit
CEREC Guide Pilot Drill Keys 2.2	64 62 563	Straumann [®] : Guided Surgery Kit, pilot drill only
Sirona CEREC Guide Drill Key Set ST	63 73 711	Straumann [®] : Guided Surgery Kit
Sirona CEREC Guide Drill Key Set NB	63 73 943	Nobel Biocare:* <ul style="list-style-type: none"> • Branemark[®] System Guided Surgery Kit • NobelReplace[®] Straight Guided Surgery Kit • NobelReplace[®] Tapered Guided Surgery Kit • NobelActive Guided Surgery Kit
Sirona CEREC Guide Drill Key Set AT	63 73 950	AstraTech: Facilitate [®]
Sirona CEREC Guide Drill Key Set B	63 73 968	Biomet 3i: Navigator [®]
Sirona CEREC Guide Drill Key Set C	63 73 729	Camlog guided drills**

* Noble Biocare: The drills for WP and 6.0 implants are not supported.

** Not suitable for use with the CEREC Guide Blocs S, M or L (CEREC Guide 1)

Each drill key is marked with the information for the sleeve diameter and drill diameter:

- Sizes S, M and L state the compatibility with the planned sleeve diameter. In the case of CEREC Guide 1, this is prescribed by the selection of the reference unit.
 If, for example, a scan template with a white reference unit is generated (size M), then a CEREC Guide Bloc M is used for the drill bit. In this case, only drill bits labeled with an M are suitable. In the case of CEREC Guide 2, when planning the sleeve in GALILEOS Implant, a determination is made as to whether the drill key size S, M or L is used.
- The numerical value specified corresponds to the inside diameter of the drill key in mm. This value does not correspond to the drill diameter in all systems.
 The following table specifies which original manufacturer drill key corresponds to the respective drill key from the Sirona drill key set.

Overview of drill keys

Drill set	Original key designation	Ø drill = Ø inside tray	S (Ø ≤ 3.5)	M (Ø ≤ 4.3)	L (Ø ≤ 5.0)
CEREC Guide Pilot Drill Keys 2.0					
The set contains three drill keys					
Branemark System Guided Surgery Kit	NP Ø 2	2.0	X	X	X
NobelReplace Straight Guided Surgery Kit					
NobelReplace Tapered Guided Surgery Kit					
NobelActive Guided Surgery Kit					
Astra Tech Facilitate	2.0				
Biomet 3i Navigator	2.0				
CEREC Guide Pilot Drill Keys 2.2					
The set contains three drill keys					
Straumann	Ø 2.2 mm	2.2	X	X	X
CEREC Guide Drill Key Set ST (for Straumann)					
The set contains 11 drive keys in 2 sterilized boxes.					
Guided drills	Ø 2.2 mm	2.2	X	X	X
	Ø 2.8 mm	2.8	X	X	X
	Ø 3.5 mm	3.5	X	X	X
	Ø 4.2 mm	4.2	-	X	X
CEREC Guide Drill Key Set NB (for Nobel Biocare)					
The largest drill diameter for the insertion of WP and 6.0 implants is not supported.					
The set contains 25 drive keys in 3 sterilized boxes.					

Drill set	Original key designation	Ø drill = Ø inside tray	S (Ø ≤ 3.5)	M (Ø ≤ 4.3)	L (Ø ≤ 5.0)	
Branemark System Guided Surgery Kit NobelReplace Straight Guided Surgery Kit NobelReplace Tapered Guided Surgery Kit NobelActive Guided Surgery Kit	NP Ø 2 RP Ø 2 6/WP Ø 2	2.0	X	X	X	
	NP Ø 2.8 RP Ø 2.8	2.8	X	X	X	
	NP Ø 3 RP Ø 3 6/WP Ø 3	3.0	X	X	X	
	RP Ø 3.2 NP Ø 3.2	3.2	X	X	X	
	RP Ø 3.4	3.4	X	X	X	
	RP Ø 3.6 6/WP Ø 3.6	3.6	-	X	X	
	6/WP Ø 3.8	3.8	-	X	X	
	RP - NP 6/WP - NP	4.1	-	X	X	
	6/WP Ø 4.2 RP Ø 4.2	4.2	-	X	X	
	6/WP Ø 4.6	4.6	-	-	X	
	6/WP Ø 5 6/WP - RP	5.0	-	-	X	
	CEREC Guide Drill Key Set AT (for Astra Tech Facilitate)					
	The set contains 17 drive keys in 2 sterilized boxes.					
	Facilitate	2.0	2.0	X	X	X
		3.2	3.2	X	X	X
3.35		3.35	X	X	X	
3.7		3.7	-	X	X	
3.85		3.85	-	X	X	
4.2		4.2	-	X	X	
4.7		4.7	-	-	X	
4.85		4.85	-	-	X	
CEREC Guide Drill Key Set B (for Biomet 3i Navigator)						
The set contains 16 drive keys in 2 sterilized boxes.						

Drill set	Original key designation	Ø drill = Ø inside tray	S (Ø ≤ 3.5)	M (Ø ≤ 4.3)	L (Ø ≤ 5.0)
Navigator	2.0	2.0	X	X	X
	2.75	2.75	X	X	X
	3.0	3.0	X	X	X
	3.25	3.25	X	X	X
	3.85	3.85	-	X	X
	4.25	4.25	-	X	X
CEREC Guide Drill Key Set C (for Camlog)*					
The set contains 3 of the same drive keys in 1 sterilized box.					
Camlog	4.5 (sleeve)	4.5	-	-	X
* Not suitable for use with the CEREC Guide Blocs S, M or L (CEREC Guide 1)					

4 Application

4.1 Application information

- The CEREC Guide must only be used in cases that have been planned by a qualified dentist using the implant planning software GALILEOS Implant or SICAT Implant.
- The drill keys listed in the "Materials [→ 12]" section are mandatory for every drilling process. Under no circumstances must the drill be controlled with just the drill bit, without the use of a drill key.
- The drill must only be operated once a suitable drill key is tightly fitted in the drill bit and the tip of the drill is fully inserted through the drill key in the apical direction.
- The drill must only be removed from the drill key or drill bit once it has come to a complete standstill.
Important: Always observe the size specifications on the drill keys, reference units, blocks, and drill.
Example: The MØ2.2 mm drill key is only permissible for 2.2 mm drills following the application of a medium-sized reference unit.
- The area around the implant must be amply sprayed and cooled during the drilling process. The temperature in the drill channel must be maintained to a minimum to prevent the hard tissue from denaturing. No remnants of tissue must remain in the area around the implant.
- All materials that are used intraorally must be disinfected before use and safeguarded against aspiration when being used.
- The materials "Thermoplast", "CEREC Guide Blocs" and "reference units" (refer to "Materials [→ 12]") are intended for single use only and are not supplied in sterile packaging; also refer to "Disinfection/sterilization of the surgical guide [→ 30]".
- Please protect the surgical guide from direct sunlight and high temperatures to prevent it from deforming. Check the surgical guide before the operation. Do not use any heat-based methods to disinfect or sterilize (e.g. autoclaves), as this can cause the surgical guide to deform.

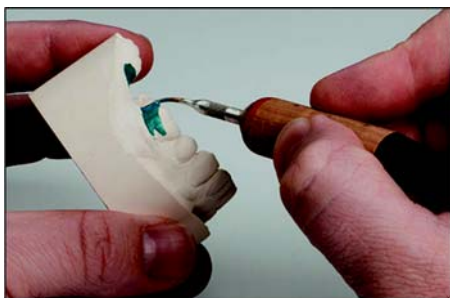
4.2 Creating a CEREC Guide 1

4.2.1 Preparation of the scan template

The heated Thermoplast is used to create an imprint of the implant area. The Thermoplast fixes the reference unit inserted on the required drilling position. The 3D X-ray can then be taken.

✓ The "implant" indication is then completed; refer to Indications [→ 5].

1. Optional: Where applicable, complete an initial CEREC scan to plan the prosthetics.



IMPORTANT

Observing the undercuts

Check the location of the implant for any problematic undercuts.

- If necessary, manually even these out, for example, by using silicone-based material. Do not use wax as it can melt when it comes into contact with warm Thermoplast.
- The template must be able to be fitted and removed again with justifiable force.

2. Create a plaster model and block off any critical areas such as undercuts using a suitable material. This material must not be heat sensitive.

3. Prepare a reference unit for use. Select a size that is in accordance with the location of the implant.



IMPORTANT

Reference units - sizes available

Always use the largest possible reference unit that will fit in the gap. The reference unit selected must also correspond to the maximum drill diameter to be used.



4. Place the Thermoplast material in a sufficiently large glass bowl.
5. Bring the water to the boil and pour the water directly over the Thermoplast so that it is fully covered.
 - ↳ Thermoplast melts at 90°C (195°F) and becomes a transparent, easily pliable mass.
 - ↳ The Thermoplast is completely transparent after two to three minutes (depending on the manufacturer).
6. **CAUTION!** Risk of burning! Do not place your hands in the water bath. Use a tool to remove the material from the water. Remove the material from the water, for example, using metal tweezers.

IMPORTANT

Processing time

Thermoplast hardens as it cools and also loses its transparency. After removing it from the water bath you will have one to three minutes to process the Thermoplast.
Hardened Thermoplast can be reheated in the water bath.

7. Depending on the type of plaster: Moisten the plaster model so that the Thermoplast can be removed easily. CEREC Stone BC generally does not need to be moistened as Thermoplast does not connect with the material.
8. In accordance with the location of the implant, shape a 2-3 mm thick plate using the Thermoplast.
9. Shape it over the location of the implant in such a way that at least the distal and mesial adjacent teeth are covered with Thermoplast.
10. Optional: Before placing the Thermoplast on the model, you can use the reference unit to create a hole in the Thermoplast. This facilitates the later removal of the residual material between the reference unit and gingiva.
11. Position the Thermoplast on the prepared area. Create an imprint by applying light pressure.
 - ↳ The Thermoplast must be pressed closely on the location of the implant and enclose it fully. Following the casting process, the template must have a stable fit.
12. Press the reference unit into the required drilling position in the Thermoplast that is still soft.



IMPORTANT

Positioning the reference unit

The reference unit must be pushed **as far in to the apical direction as possible** so that it rests on the gingiva. The template and the reference unit must not be able to be moved. The risk of any displacement caused by the tongue/cheek must be avoided.

The Thermoplast must not cover the reference unit. However, it must surround the reference unit up to the small undercut on the shoulder.

If the Thermoplast moves too far in a buccal or lingual direction when the reference unit is pushed in, it must be pushed back on to the reference unit.

If two implants are to be located next to each other, align a scanbody orally and according to the vestibular.

13. To accelerate the hardening process of the Thermoplast, you can cool it with water or a spray.
14. Remove the scan template from the model once it is completely hardened.

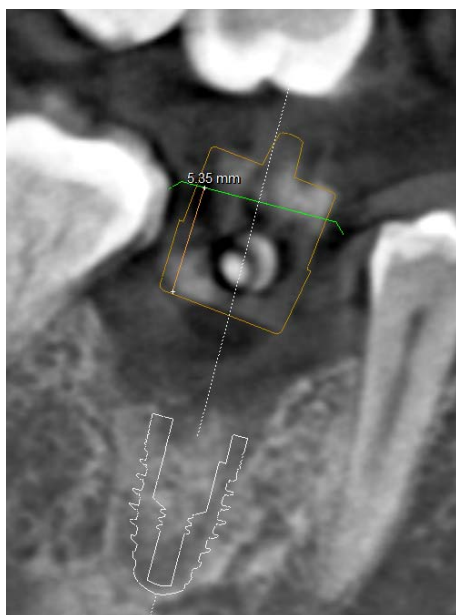
Tip: You can prevent the opposite jaw from moving during the X-ray. Insert additional Thermoplast to the side of the position of the implant to create a surface for the antagonist. Apply slight pressure to the soft mass. Once the material has hardened, the patient can bite down on it during the X-ray. Remove this Thermoplast again after the X-ray.

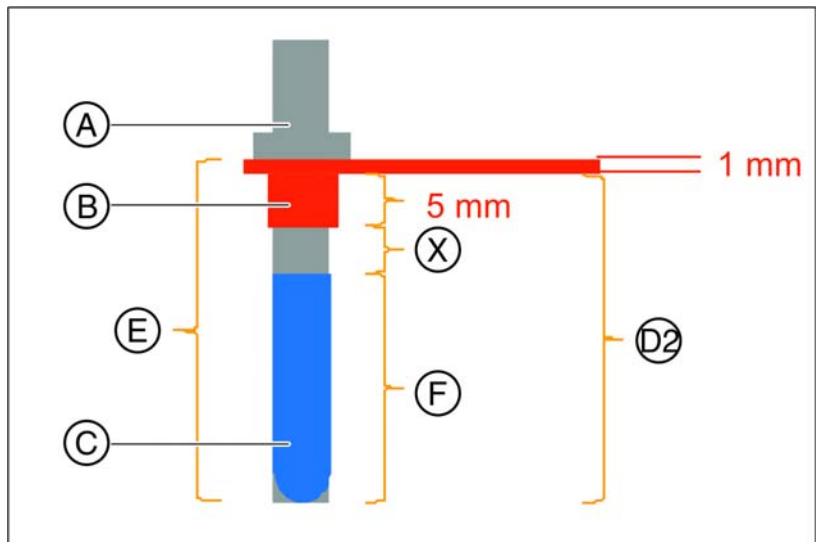
WARNING

Before using the scan template in the mouth, it must first be disinfected with a suitable disinfectant. Please also observe the cleaning specifications provided by the Thermoplast manufacturer. Thermoplasts can generally not be autoclaved.

4.2.2 Planning the implant and exporting the data

1. Insert the first scan template into the patient's mouth. Check that the seating of the template is stable and accurate. Ensure that the template and reference unit cannot move during the X-ray.
2. Take an X-ray of the patient with the scan template in place. Please refer to the operating instructions for your Sirona 3D X-ray device.
3. Remove the scan template from the patient's mouth immediately after the X-ray.
4. Open the software **GALILEOS Implant** or **SICAT Implant** and load the patient's data record.
5. To plan the implant and localize the reference unit follow the instructions provided in the "GALILEOS Implant" operator's manual. Follow the instructions provided in the chapter "Exporting plan for third-party processing". Estimate the drill length necessary. It should be longer than the combined lengths:
implant length + 6 mm + X (clearance between implant shoulder and bottom edge of the drill key).
Enter the value for D2. It is calculated from the length of the longest drill used, subtracting 1 mm.
(**D2 = drill length - 1 mm**).
The D1 value can be ignored.
6. Finally, check whether the clearance (orange line) between the bottom side of the reference unit (orange outline) and the top of the drill bit (green line) is ≥ 5 mm. If the value is less than 5 mm, select a longer drill and adjust the D2 value accordingly.



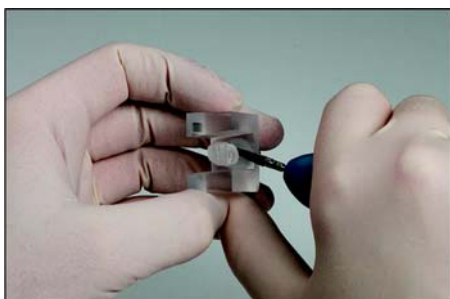
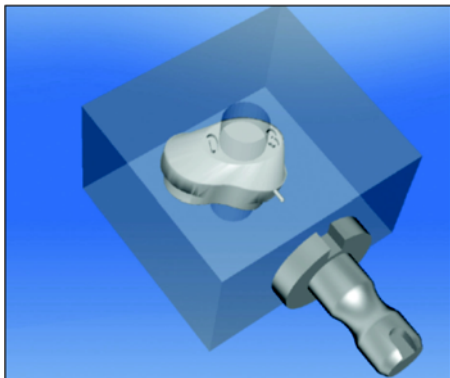


A	Drill
B	Drill key
C	Implant
D2	D2 = implant length + 5mm + clearance between implant shoulder and bottom edge of the drill key $D2 = F + 5mm + X$
E	Drill length
F	Implant length
X	Clearance between implant shoulder and bottom edge of the drill key

7. Export the data for CEREC. Follow the instructions provided in the chapter "Exporting the plan" in the "GALILEOS Implant" operator's manual.

4.2.3 Milling the drill bit

- ✓ The CEREC SW software has been started.
- ✓ Open GALILEOS Implant license is available.
- 1. Import the data in to CEREC SW. To do so, click on *"Import Case..."* in the system menu. Ensure that the file type filter in the bottom right corner of the *"Open"* dialog is set to CEREC Guide cases.
- 2. Select the file that you have just exported from GALILEOS Implant.
Tip: In standard mode, GALILEOS Implant exports CEREC Guide cases to C:\ThirdPartyExport
 - ↳ The milling preview is opened.



- 3. Select the desired milling unit as required.
The Step Bur 20 and Cylinder Pointed Bur 20 millers are used.
- 4. Insert the correct CEREC Guide Bloc into the milling chamber.
- 5. Start the milling process.
 - ↳ The drill bit is created.
- 6. Remove the drill bit from the block. Ensure that the sprue position on the drill bit is as flush as possible when disconnected. The best results are achieved by using cross-toothed plastic milling tools at a low speed.

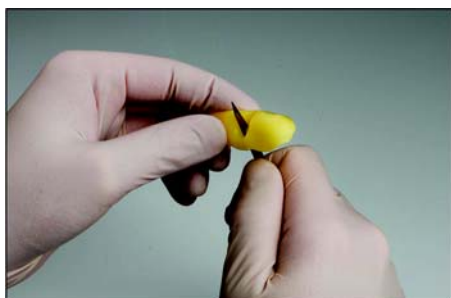
4.2.4 Creating the surgical guide

The scan template is now used to create a surgical guide, by removing the reference unit(s) and replacing it/them with the suitable drill bit(s).

Tip: In the event of several implants, the drill bits can be distinguished by the tooth number that is engraved on the drill bit.



1. Carefully twist the reference unit to remove it from the scan template.



2. Ensure that there is no Thermoplast residue under the drill bit. The drill channel must not be blocked. Use a sharp scalpel.

Tip: Thin areas of the hardened Thermoplast can be cut using a scalpel. Stronger parts can be processed with a very slow turning handpiece, such as a three-edged cutter for processing thermoforming films.

When processing, use a water spray for cooling purposes. If the instrument causes the Thermoplast to become too warm, the plastic will become liquid again, deform, and block the instrument. Therefore only use the handpiece in areas that are too thick for the scalpel.



3. Use the model to ensure that adequate drainage of the rinsing liquid is guaranteed during the operation. Adapt the template, if necessary, by adding holes for rinsing purposes.



4. Insert the drill bit into the template. Attach the drill bit with adhesive that is approved for intraoral applications (e.g. LOCTITE® 4601).
5. Disinfect the surgical guide before you use this in the patient's mouth.
6. Reinsert the surgical guide into the patient's mouth.



7. Select the drill key required which corresponds to the drills specified by the manufacturer of the guided system. Also adhere to the drill key assignment table in the chapter regarding "Drill key sets" in Materials [→ 12]).

 **CAUTION**

This checklist must be fully verified before the drilling process:

- Drill bit is fixed in the template.
- Surgical guide clicks into the correct position
- Once in place, the surgical guide is secured tightly (no "play" or "wobbling")
- The drill channel guide corresponds to the implant plan
- ↪ If one of these points does not apply, an optical impression (CEREC) of the situation must be imported into the X-ray volume and a SICAT OptiGuide must be ordered; refer to the "GALILEOS Implant" manual.

8. Start the implantation in accordance with the instructions provided by your drill supplier.

4.3 Creating a CEREC Guide 2

4.3.1 Optical impression

1. Scan the situation in the mouth either intraorally or using a model.
The following applies at least to all areas, which are intended to later serve as a support for the CEREC Guide 2. The surface scan is also used for the overlay of the x-ray volume.

NOTICE

Note that the drilling template cannot be bigger than the scanned area. Avoid holes in the scan. Otherwise, no locating surface for the CEREC Guide 2 can be determined at these points.

2. Design a restoration at the planned implant position. Mark the emergence profile of the tooth on the gingiva in manual entry mode.
3. Export the data record using in *.SSI format.

4.3.2 3D x-ray and implant planning

A DVT scan can be performed before or after the optical impression. Make sure that there are no metal artifacts in the scan, as these may hinder the overlay of optical data with the x-ray volume or even make it impossible. Do not scan the patient at the final bite position, but rather with a slightly opened jaw. Remove all removable metal parts in the opposing jaw (e.g. prosthetics). If possible, record 3/4 of the arch of the jaw. This increases the likeliness that teeth free from artifacts can be used for registration.

To produce a CEREC Guide 2, the import of the previously created *.SSI data record in GALILEOS Implant is necessary. The optical surface scan is superimposed over the X-ray volume.

CAUTION

Check that the optical impression is correctly aligned with the X-ray data record. This makes it possible to determine the the implant location while also considering the soft tissue and prosthetic planning.

If multiple implants are to be planned, multiple *.SSI data records must be imported.

Select CEREC Guide 2 as the sleeve system. You then have three sleeves available to choose from, which match the CEREC Guide drill keys S, M or L respectively.

NOTICE

When selecting the bushing, ensure that it does not collide with neighboring teeth and the drill key and the drill itself can be introduced without a collision.

Note that selecting a smaller sleeve may limit the use of larger drill diameters.

The Camlog Guided System is only compatible with sleeve L.

If, for example only one pilot hole is to be created, the selection of size S is sufficient (apart from Camlog).

The specification of a depth stop is oriented on the length of the drill used. The planned position is reached when drilling once the mechanical stop of the drill reaches the drill key or (if the drill does not have a stop) the length marking on the drill is lowered to the upper side of the drill key.

In the GALILEOS Implant software, the depth stop is to be entered using the D2 value. The D2 value is defined as the distance from the side of the drilling template to the apical top of the implant. As the drill strikes the 1 mm thick drill key, the D2 value to be set results from the length of the drill minus one millimeter

(D2 = drill length – 1 mm).

The statement of the D1 value is to be ignored.

After entering the D2 value, the sleeve is visualized above the implant at the relevant height.

- Ensure that the sleeve does not collide with neighboring teeth and the drill key and the drill itself can be introduced without a collision.
- If the representation of the underside of the sleeve cuts the scan shown as the yellow line, this indicates that the position of the drill key is at least partially subgingival.

Multiple implants and sleeve positions are planned in the same way. It is possible to export this as a file. Export the plan for “processing by third-party providers by way of optical impressions” as a .CMD.DXD file.

4.3.3 Design and development of the CEREC Guide 2

By selecting "*Import*", you can switch the directly load the *.CMG.DXD file.

Phase ADMINISTRATION

If the plan contains multiple implants, these will be treated as multiple separate restorations.

Select the machine type for development. This determines the possibilities for further processing.

Phase MODEL

If the original scan is presented, which was also the basis for the implant planning. All areas, which are not intended to serve as a support for the CEREC Guide 2 should be cut. This includes, for example, larger areas of gingiva outside the planned implant position. Parts of the residual teeth may also be discarded if they are not required for support.

Note that a longer template is easier to hold in position with one finger and ensures secure support. This applies to free-end situations in particular.

Phase DESIGN

The position and shape of the sleeve cannot be changed using general design tools.

If a sleeve is shown in red, parts of it are subgingival. Determine whether these areas are to be cut away (e.g. to enable the unhindered placement on a model) or are to be left as they are. They color of the sleeve then turns green.

Optionally, you can create side access to introduce the drill from the side. This is only recommended for reasons of stability where required due to a lack of space.

After calculating the template element and if necessary orienting it in the block, you have the option of creating viewing panels, which you can use to check the fitting of the template even during the surgical intervention.

You can then still adapt the design of the template by cutting away any problematic areas.

Phase MILL

Where necessary, ensure that you have activated "*Configuration*" the option "*Milling*".

So that the milling process runs without interruption, ensure where necessary that milling tools with a sufficient service life are used, the water filter has been cleaned and there is sufficient water in the tank.

After milling, ensure that no shavings enter into the tank during the cleaning process, as these can quickly clog the water filter.

4.3.4 Surgical intervention

CAUTION

Remove burrs and round sharp corners on the template element. Check that the template fits correctly beforehand where necessary using a model. The template element must be completely slid open and must not wobble.

Clean and disinfect the CEREC Guide 2 as described in the chapter below.

Select the drill key required which corresponds to the drills specified by the manufacturer of the guided system. Also adhere to the drill key assignment table.

Ensure that the drill key can fully enter the drill hole and stops there without wobbling.

1. Perform the implantation according to the implant manufacturer's instructions.
2. Fix the template in the mouth, holding it in position with your finger if necessary.

Tip: If you have created access to the drill from the side due to a lack of space, first place the CEREC Guide 2 into the patient's mouth. Then guide the drill key through the drill and push it upwards. Now guide the drill through the side into the sleeve position and lower the drill key to the stop point. Then start drilling.

5 Disinfection/sterilization of the surgical guide

Disinfecting

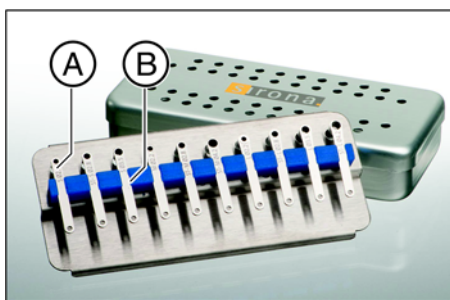
The CEREC Guide Blocs including the reference units are supplied unsterilized and must be disinfected with standard practice equipment.

Recommended disinfectant e.g.

"Dentavon[®] Liquid" from Schülke & Mayr

Please also observe the cleaning specifications provided by the Thermoplast manufacturer.

Sterilizing



The drill key (A) and terminal strip (B) are supplied unsterilized and must be steam sterilized using a standard practice sterilization device.

The drill keys must be sterilized before being used in the mouth. Furthermore, the locally applicable legal regulations and the hygiene standards applicable for a dental practice must be observed. Only use the approved sterilization procedures specified below to sterilize the drill keys. Observe the sterilization parameters.

Steam sterilization can be performed with the fractionated vacuum or the gravitation method. The sterilization time is 5 minutes at 132°C / 270°F and 15 minutes at 121°C / 250°F. Steam sterilization may be performed only using devices that comply with EN 13060 or EN 285 standards. Sterilization methods must be validated in compliance with EN ISO 17664.

The responsibility for the sterility of the drill keys lies with the user. It must be ensured that only suitable devices, materials and product-specifically validated methods are used to perform sterilization. It must be ensured that the methods used have been validated. The equipment and devices must be properly maintained and serviced at regular intervals.

The manufacturer (dentist/dental technician/dental assistant) must inform the user about the required sterilization process before insertion in the patient's mouth!

We reserve the right to make any alterations which may be required due to technical improvements.

© Sirona Dental Systems GmbH 2015
D3587.201.01.06.23 06.2015

Sprache: englisch (US)
A.-Nr.: 120 611

Printed in Germany

Sirona Dental Systems GmbH

Fabrikstraße 31
D-64625 Bensheim
Germany
www.sirona.com

in the USA:

Sirona Dental Systems LLC
4835 Sirona Drive, Suite 100
Charlotte, NC 28273
USA

Order No **63 96 100 D3587**